



Year 7 Art Knowledge Organiser – Post Impressionism

Identifying the formal elements

Colour

The use of complementary colours in this painting accentuates the contrast.



Line

Van Gogh uses brushes, pens, and pencils to create lines that describe a variety of surfaces.



Texture

Characteristic of Van Gogh's painting style is the textured surface created using impasto oil paint.



Tone

The subtle use of tone describes the soft folds of fabric on the man's clothes.



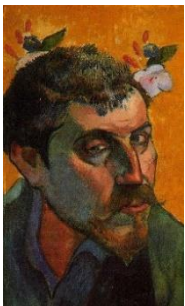
Form

Van Gogh makes the vase look three-dimensional. He emphasises the space and volume using paint.



Paul Gauguin

Paul Gauguin was a close friend of Van Gogh. In 1888, he joined Van Gogh in the town of Arles and the two artists worked side by side. During this time Gauguin produced a portrait of Van Gogh, and they painted the landscape. Gauguin left Arles after a quarrel with Van Gogh.



2017 Most recent sale, a landscape painted in 1888, sold for £60.8 million

1987 Vincent's painting is sold in London for £25 million

1890 Vincent kills himself

1889 Vincent becomes mentally ill and is put into an asylum

1888 Vincent goes to the south of France to paint

1886 Vincent goes to Paris to paint. He stays with Theo and meets the impressionists

1880 Vincent leaves the Church and becomes a painter

1877 Vincent goes to work for the Church in Belgium

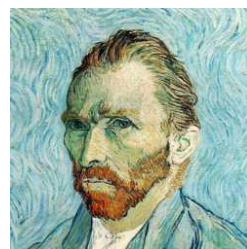
1874 Vincent goes to London to work for an Art Dealer

1853 Van Gogh was born in Holland



Keywords

Post-Impressionist	Main artists: Vincent van Gogh, Paul Gauguin, Paul Cezanne, and Georges Seurat.
Western art	Western arts, the literary, performing, and visual arts of Europe and regions that share a European cultural tradition, including the United States and Canada.
Landscapes	a painting representing a view of countryside
Still life	The subject matter of a still life painting or sculpture is anything that does not move or is dead.
Portraits	Portrait painting is a genre in painting, where the intent is to depict a human subject.
Self-portraits	A self-portrait is a representation of an artist that is drawn, painted, photographed, or sculpted by that artist.
Expressive Brushwork	Application of paint in a dynamic and gestural way.
Impasto	the process or technique of laying on paint or pigment thickly so that it stands out from a surface
Modern Art	Work created between the late 19 th and late 20 th century.



Vincent Willem van Gogh (30th March 1853 – 29th July 1890) was a Dutch **Post-Impressionist** painter who is among the most famous and influential figures in the history of **Western art**. In just over a decade he created about 2,100 artworks, including around 860 oil paintings, most of them in the last two years of his life. They include **landscapes**, **still life**, **portraits** and **self-portraits**, and are characterised by bold colours and dramatic, **expressive brushwork** that contributed to the foundations of **modern art**. His suicide at 37 followed years of mental illness and poverty.